

The Calstock Hoist

When the railway was opened on 2nd March 1908 at the Calstock end of the viaduct a wagon lift was erected to provide access to the quay. The lift was one of the highest in England. 113ft above the quay.

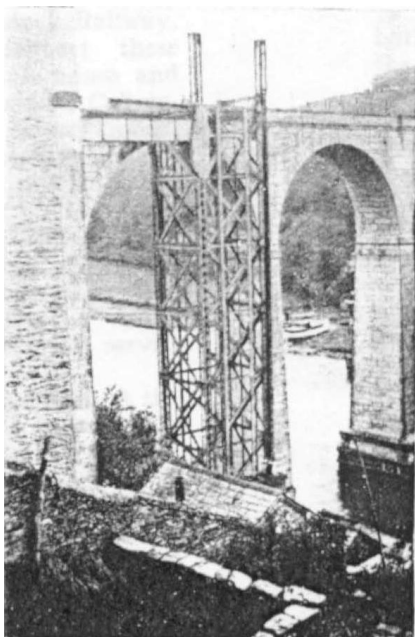
The lift was designed by Messrs Galbraith and Church the LSWR engineers and was installed by Head Wright Son and Co the foundations being taken out by the viaduct builder John Lang in 1907.

The cage and framework of the lift were composed almost entirely of mild steel, forming strongly braced structures with an ample margin of strength. The cage could hold one four wheeled open wagon weighing laden 15 tons. The motive power for raising and lowering the cage was provided by a steam boiler and powerful winding engine fixed to the top of the lift framing. Duplicate steel ropes were provided to raise the cage. Each of these was capable of holding the load should the other have failed.

The cage was held at the top platform level by a safety securing device, safety gates at both top and bottom were worked automatically by the cage so that they closed the entrance as soon as it left either level. An electric bell was operated by the cage as it approached its destination.

There was a short approach of steel girders at the top, parallel with the viaduct, along which trucks were pushed. The girders were supported by large concrete plinths, which can still be seen. At the lower level the wagon would be hauled out of the cage on a turntable and turned on to sidings, which ran along the quay. Wagons of Granite and Bricks used the lift, but as the railway became more popular, the lift was used less.

The lift was taken down in 1934. The Western Morning News of 8th September 1934 contained a brief and prosaic advertisement, which provided the only official obituary of the Calstock wagon hoist built less than thirty years earlier. The lift was eventually sold as scrap to Germany in 1938!!!



**TO ENGINEERS, CONTRACTORS,
BUILDERS; AND OTHERS.
DISMANTLING OF THE WAGON
HOIST
CALSTOCK STATION, SOUTHERN RAILWAY,
CORNWALL
FOR SALE**

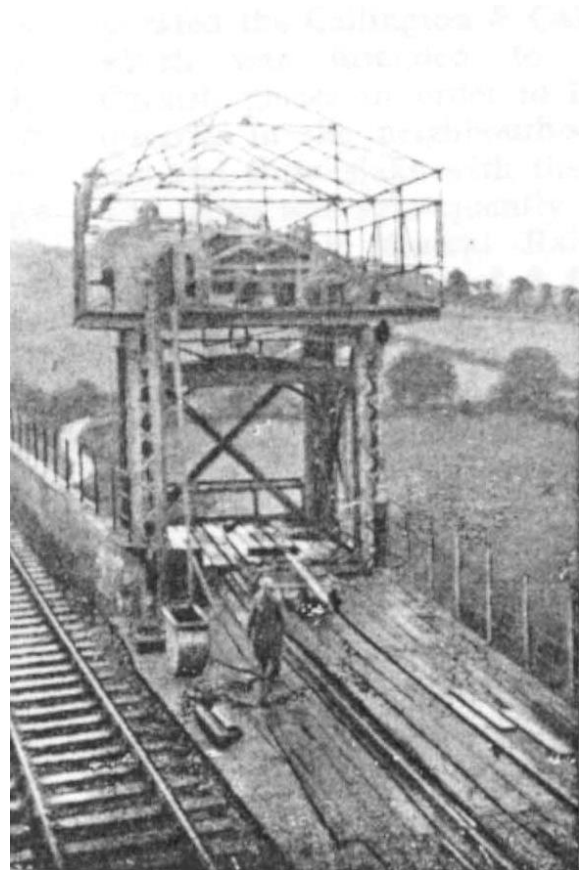
Steel-framed Engin-house, Loco Boiler, Winding Engine, three large main Bridge Girders, a quantity of Rolled Steel Joists, Channels, Angles of various lengths and dimensions; all in good condition. Also Flat-bottomed Rails Crossings and Turntable; Wire Ropes Water Piping, Seasoned Timber, and useful Sundries, arising from above.

Price reasonable.

Printed list obtainable, or inspection on application to

Mr. J. S. BARBOUR
Foreman-in-charge
c/o Station-master, Calstock

Above. The add from the WMN Sep 1938



Above & left. The lift being dismantled